

Medical Education Doll One-Piece Romper

Print 2 copies
Cut out both pattern sections
Join and tape at dotted lines

Shoulder

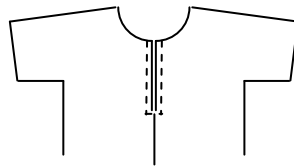
Medical Doll Romper

©2016 Mary Hogan

You may use this pattern for any purpose
except reproduction and sale of the pattern itself

Cut 4 pieces; 2 this side and 2 reverse; Use ¼" seams

1. Front: Sew 2 pieces together at the center seam
2. Back: Sew 2 pieces together at the center seam below the "X"
3. Back Center Opening: Fold the edges of opening to the wrong side and sew as shown on right side.



4. Sew shoulder seams
5. Hem the sleeves

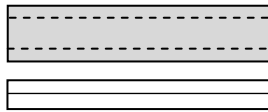
Armhole hem here ↴

Center back facing

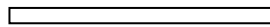
Front center ↴. trim off extra fabric after sewing center seam

X

6. Sew side seams
7. Hem the legs
8. Sew crotch seam
9. Prepare neck binding and tie:
Cut a 2" (or 2½") X 20" strip of fabric.
On wrong side, fold the sides to center and press.



Fold in half again and press



10. Apply neck binding and tie.

Sides ↴

Crotch seam ↴

Hem the pants legs here ↓